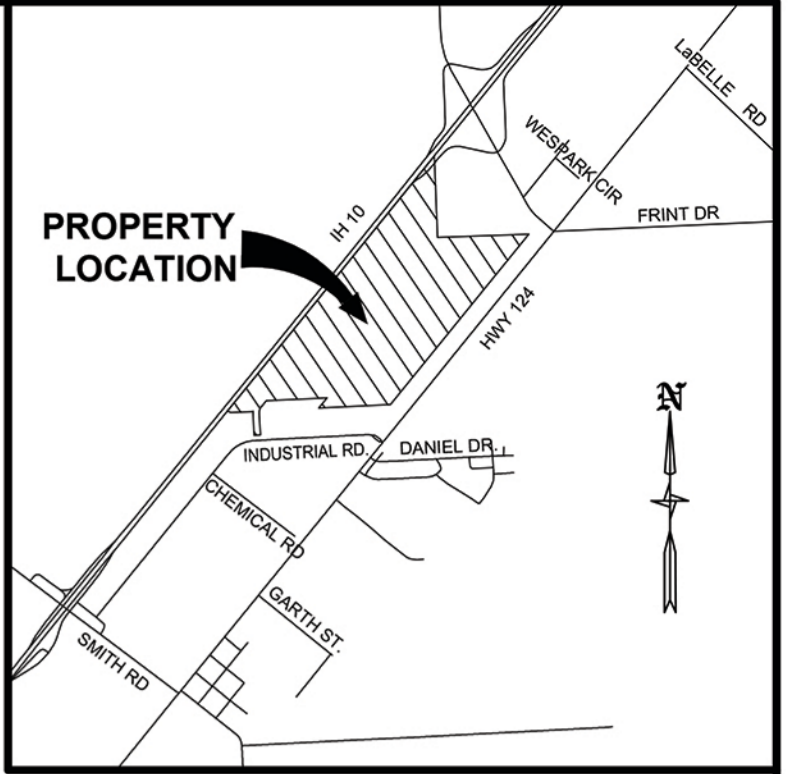
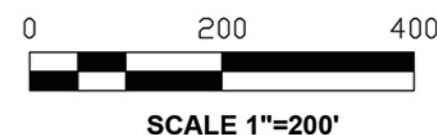
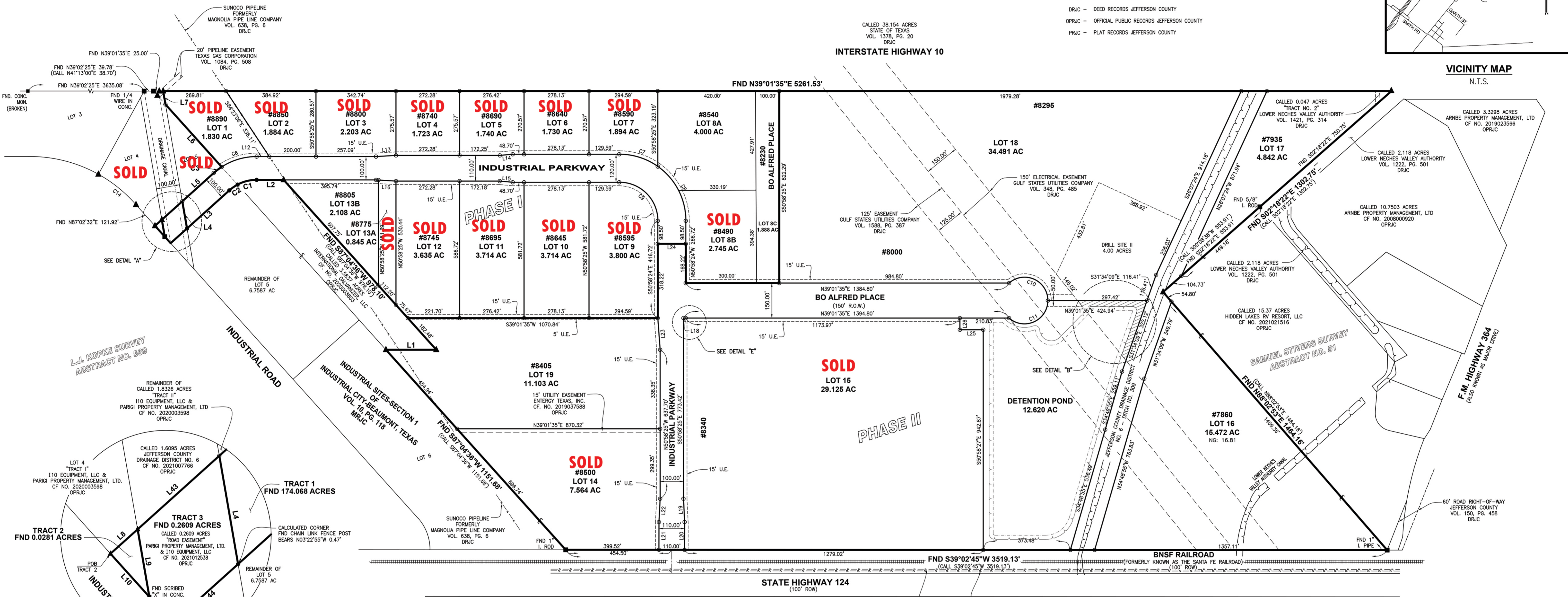


LEGEND

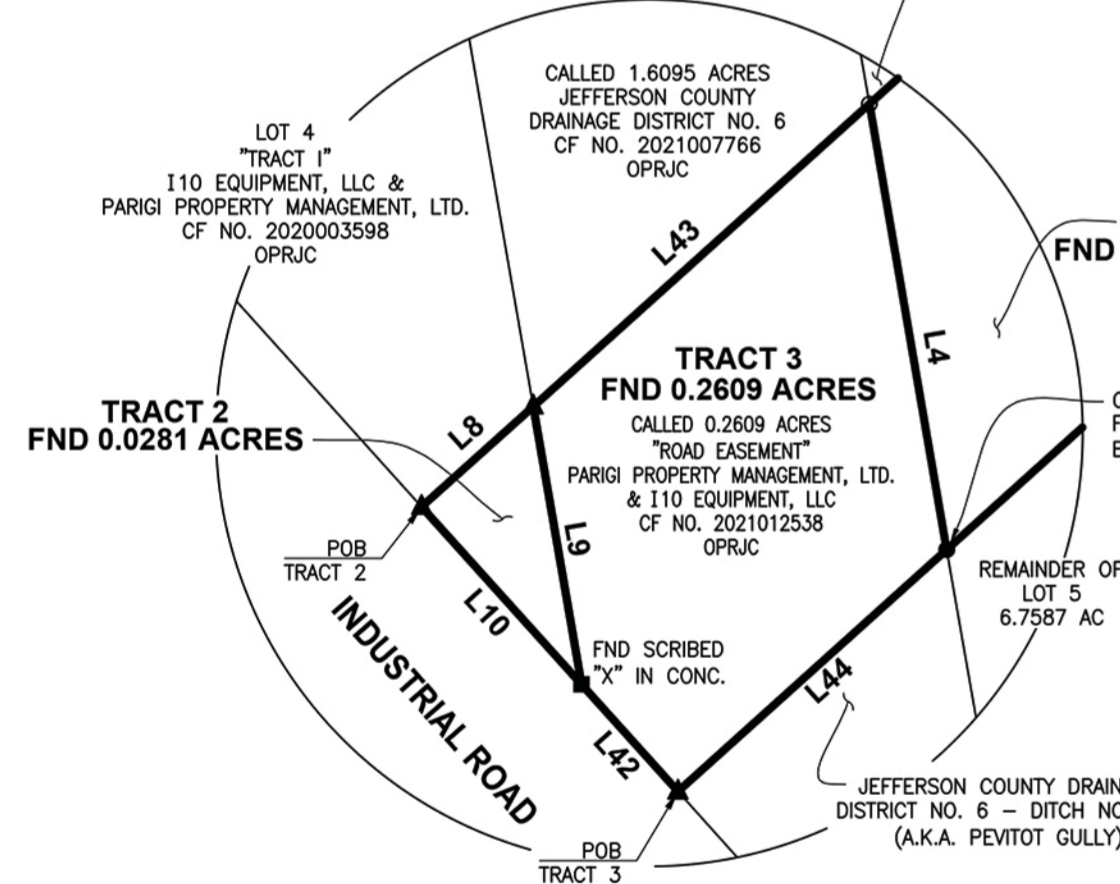
- - FOUND ROD AS NOTED
- ▲ - FND 5/8" I. ROD W/CAP STAMPED "M.W. WHITELEY AND ASSOCIATES"
- - SET 5/8" I. ROD W/CAP STAMPED "M.W. WHITELEY AND ASSOCIATES"
- - CALCULATED CORNER UNABLE TO FIND OR SET
- - - PC OR PT OF CURVE
- - - UTILITY EASEMENT
- DRJC - DEED RECORDS JEFFERSON COUNTY
- OPRJ - OFFICIAL PUBLIC RECORDS JEFFERSON COUNTY
- PRJC - PLAT RECORDS JEFFERSON COUNTY



VICINITY MAP
N.T.S.

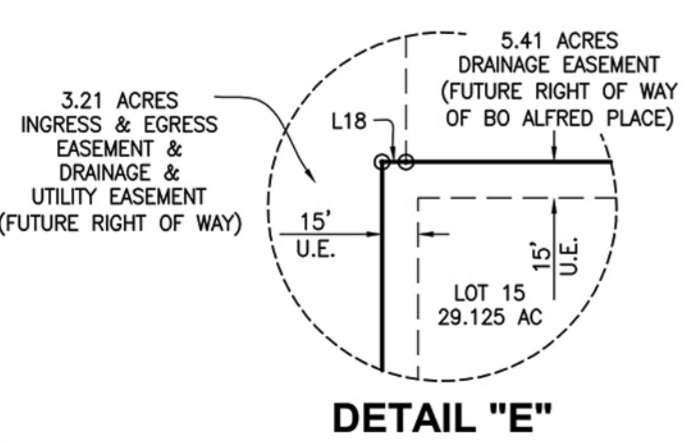


L.J. KOPKE SURVEY
ABSTRACT NO. 569



DETAIL "A"

AVAILABLE LOTS	
LOT 8A	4.000 ACRES
LOT 8C	1.888 ACRES
LOT 13B	2.108 ACRES
LOT 16	15.472 ACRES
LOT 17	4.842 ACRES
LOT 18	34.491 ACRES
LOT 19	11.103 ACRES



DETAIL "E"

LINE	BEARING	DISTANCE
FND L1	N39°01'35"E	215.58
CALL L1	N39°01'35"E	215.58
FND L2	S39°01'35"W	115.83
CALL L2	S39°01'35"W	115.83
FND L3	S02°57'28"E	243.57
CALL L3	S02°57'28"E	243.57
L4	N69°50'01"W	118.08
L5	N02°57'28"E	180.78
L6	S87°04'36"W	360.06
L7	N69°50'01"W	57.99
L8	N02°57'28"W	39.18
L9	S60°50'01"E	73.67
L10	S87°02'32"W	62.39
L12	N39°01'35"E	54.36
L13	S35°41'07"W	85.80
L14	S33°52'29"W	55.69
L15	N44°10'14"E	55.76
L16	N42°22'19"E	85.68
L18	S39°01'35"W	10.00
L19	S53°50'10"E	100.12
L20	S50°57'13"E	119.01
L21	N50°57'15"W	118.97
L22	N48°06'41"W	100.12
L23	N55°11'18"W	136.09
L24	N39°01'35"E	120.00
L25	S39°01'35"W	100.00
L26	N50°58'25"W	50.00
L39	N90°00'00"W	29.34
L40	S06°40'36"E	16.93
L41	N69°53'38"W	55.46
L42	S87°02'32"W	37.81
L43	N02°57'28"E	118.08
L44	N02°57'28"W	94.46

CURVE	RADIUS	ARC LENGTH	CHORD LENGTH	CHORD BEARING	DELTA ANGLE
FND C1	175.00'	84.89'	84.06'	S25°07'46"W	27°47'38"
CALL C1	175.00'	84.89'	84.06'	S25°07'46"W	27°47'38"
FND C2	175.00'	43.34'	43.23'	S04°08'14"W	1°41'12"
CALL C2	175.00'	43.34'	43.23'	S04°08'14"W	1°41'12"
C3	275.00'	43.14'	43.09'	N01°32'10"E	8°59'16"
C6	275.00'	158.37'	156.19'	N22°31'41"E	32°59'47"
C7	285.00'	175.97'	173.19'	N56°42'52"E	35°22'38"
C8	285.00'	271.71'	261.53'	S78°17'07"E	54°37'23"
C9	165.00'	259.18'	233.35'	S84°01'35"W	90°00'00"
C10	100.00'	229.35'	182.29'	N63°19'17"E	131°24'35"
C11	100.00'	229.35'	182.29'	S14°43'52"W	131°24'35"
C12	20.00'	38.19'	32.85'	N68°16'17"W	109°24'16"
C13	20.00'	15.95'	15.53'	S16°10'28"W	45°42'11"
C14	602.96'	208.07'	207.04'	S78°01'23"W	19°46'18"

LEAD
LEAVINS ENGINEERING & DESIGN, LLC
TEXAS ENGINEERING FIRM NO. F-22257
3260 EASTEX FWY, BEAUMONT, TEXAS 77703
409-892-0421 | LEADLLC.COM

19 LOTS ACRES: 174.357

SALES MAP OF INTERSTATE 10 INDUSTRIAL PARK

OUT OF AND PART OF A PORTION OF LOTS 4 AND 5 INDUSTRIAL SITES - SECTION 1 OF INDUSTRIAL CITY - BEAUMONT, TEXAS VOL. 10, PG. 118, MAP RECORDS AND OUT OF AND PART OF REMAINDER OF 177.09 ACRES CF NO. 2019005003 OFFICIAL PROPERTY RECORDS JEFFERSON COUNTY, TEXAS L.J. KOPKE SURVEY, ABSTRACT NO. 569 H.T. & B.R.R. SURVEY, SECTION NO. 15, ABSTRACT NO. 145 JEFFERSON COUNTY, TEXAS